

# CONCERT BREEZE's Manual

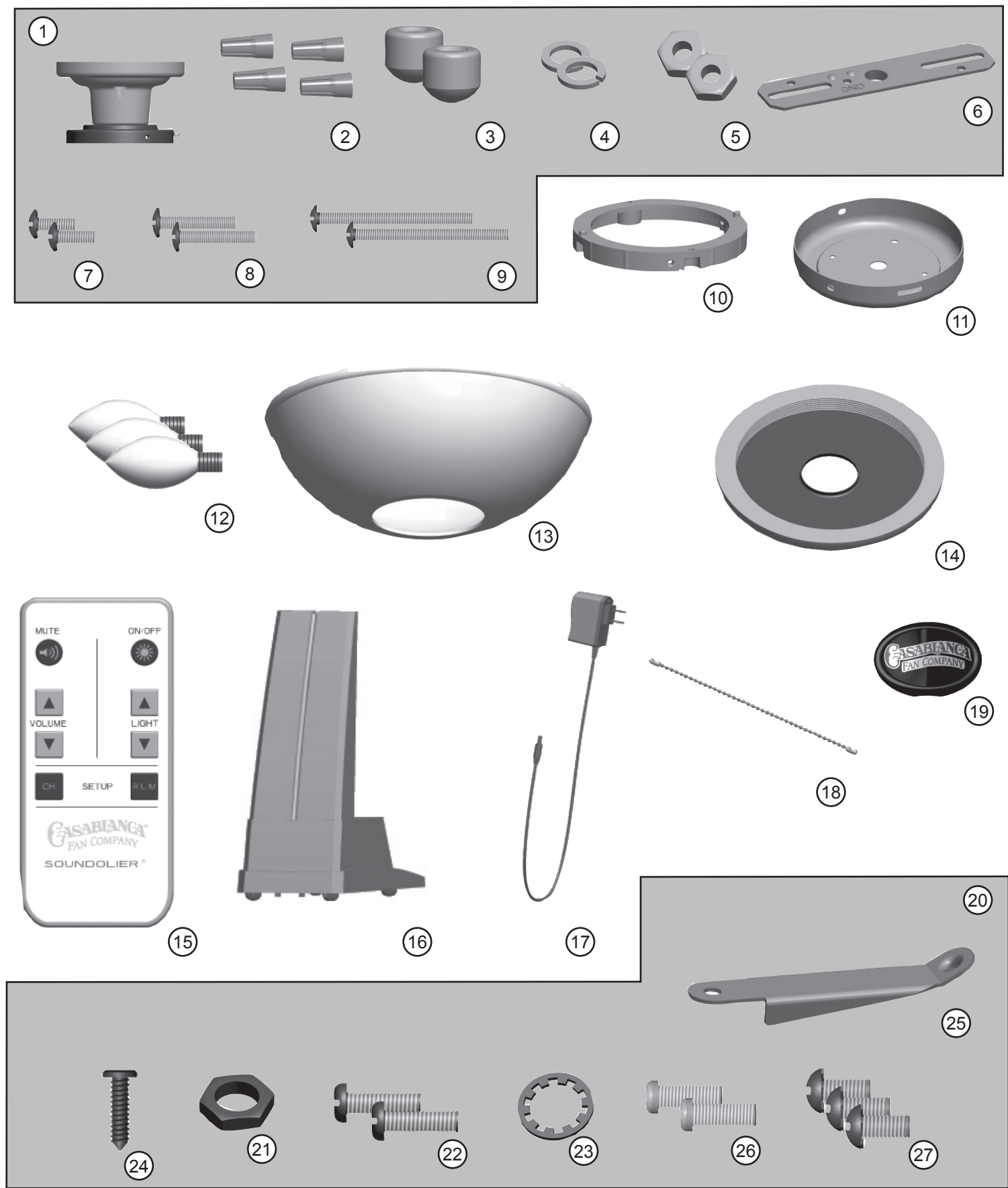
## READ AND SAVE THESE INSTRUCTIONS!

Safety and the proper operation of your Casablanca Concert Breeze require a thorough knowledge of the product and proper installation; therefore, before attempting to install and operate your Casablanca Concert Breeze, read this owner's manual completely and carefully. Retain this manual for future reference.

**CAUTION: To avoid possible electrical shock, make certain that electricity is turned off at the circuit breaker or fuse box before attempting any installation procedure.**

## CONTENTS

<b>Parts List</b>	<b>3</b>
<b>Introduction</b>	<b>5</b>
Before You Start	5
Safe Use	5
Optional Accessories	5
Getting Started	6
<b>Installation on a ceiling</b>	<b>6</b>
Mounting Bracket Installation	6
Canopy Installation	7
Cap Installation	8
Wiring and Installing Light Kit/ Speaker	8
<b>Installation on a Fan</b>	<b>9</b>
Cap Installation	9
Installing on a fan with pull chain reversing	10
Installing Fan Adaptor	10
Wiring and Installing Light Kit/ Speaker	10
<b>Completing installation of light kit</b>	<b>11</b>
Installing light bulbs and Glass	11
<b>Installation and setup of maestro™ and remote</b>	<b>13</b>
Setting up the maestro™	13
Operating the remote control (light/speaker)	14
Changing the channel on the Maestro™ and Concert Breeze	15
<b>Installing on a Hunter Ceiling Fan</b>	<b>16</b>
<b>Troubleshooting Tips</b>	<b>17</b>
<b>Care Recommendations</b>	<b>18</b>



Parts List

Item #	Item Name	Qty	Model #	CSLK-11	CSLK-73	CSLK-45
			Asm. Dwg. #	99362-01	99362-02	99362-03
			Finish	Snow White	Oil Rubbed Bronze	Brushed Nickel
1	Canopy Assembly	1	77391-01-000	77391-02-000	77391-03-000	
2	Wire Nut	4				
3	Thumb Nut	2				
4	Spring Washer	2				
5	Hex Nut #8-32	2				
6	Hang True Bracket	1				
7	Ceiling Box Screws #8-32 .50"	2				
8	Canopy Screws #8-32 1.25"	2				
9	Canopy Screws #8-32 2.20"	2				
10	Casablanca Adaptor	1	88958-01-200	88958-01-200	88958-01-200	
11	Soundelier Cap	1	88959-02-203	88959-02-308	88959-02-214	
12	Light Bulb/bulb	3	77646-07-000	77646-07-000	77646-07-000	
13	Glass	1	89284-02-000	89284-01-000	89284-02-000	
14	Finial	1	88921-02-203	88921-02-308	88921-02-214	
15	Remote	1	89074-01-000	89074-01-000	89074-01-000	
16	Maestro™	1	89004-01-000	89004-01-000	89004-01-000	
17	Maestro™ Power Supply	1	77318-01-000	77318-01-000	77318-01-000	
18	Pull Chain	1	77466-35-133	77466-35-247	77466-35-133	
19	Pull Chain Pendant	1	65953-01-000	65953-02-000	65953-01-000	
20	Concert Breeze Hardware Pack	1	G0518-01-000	G0518-02-000	G0518-01-000	
2	Wire Nut	2				
21	1/8" IPS Nut	1				
22	Light Kit Screws	2				
23	Star Washer	1				
24	#8-32 Tapped Screw	1				
25	Chain Guide	1				
26	#8-32 Casa Adaptor Screws	2				
27	#8-32 Cap Assembly Screws	3				



PLEASE INSPECT ALL PACKAGING PRIOR TO DISCARDING!  
Your Casablanca accessory was crafted with pride and care and inspected thoroughly prior to shipment. Before you begin to assemble and install your Casablanca accessory, remove all parts from the carton and check them against the Parts Guide in this manual. Make sure all parts are included in the box using the Parts Guide on the following pages.

If there are missing or broken parts:  
Call 1-888-227-2178 Monday through Friday, 8 a.m. to 4:30 p.m. CT. Your request will be handled immediately. Replacement parts will be sent to you via Federal Express.

**Proper Parts Handling**

Do not remove lightbulbs from their packaging until you are ready to install them.

Before discarding packaging materials, be certain that all parts have been removed.

Use a clean, dry paintbrush to remove small Styrofoam pieces that may remain after unpacking.

Do not brush Styrofoam into wiring cavities.

Always turn power to the light kit OFF before replacing lightbulbs.

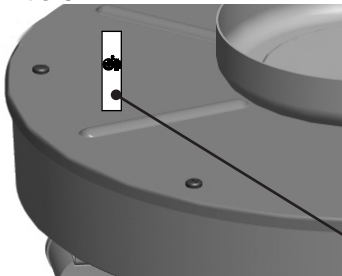
**If the light kit does not work:**

Refer to the Troubleshooting Tips in this Owner's Manual.

Call Technical Support at 1-888-227-2178. Contact your local Authorized Service Center. Our Web site at [www.casablancafanco.com](http://www.casablancafanco.com) contains additional information on Casablanca products, troubleshooting, and Authorized Dealer or Service Centers. Please do not return this product to the store.

**RECORD MODEL NUMBERS BEFORE INSTALLATION!**

Please take a moment to locate the model number from your Concert Breeze (see below) and record this information on the Warranty page inside the front cover of your Owner's Manual if it does not appear there already. These numbers are found on the motor identification plate affixed to the fan motor in the location shown below:



Casablanca®  
FAN COMPANY

Model Number

CONCERT BREEZE LIGHT KIT  
MODEL NO. XXXX  
LUMINAIRE  
120V 60HZ XXXW  
LIGHT KIT  
XXX MADE IN CHINA

CAUTION: TO REDUCE THE RISK OF FIRE AND ELECTRIC SHOCK, INSTALL LIGHT KIT ONLY ON CEILING FAN MODELS SPECIFIED IN THE INSTALLATION INSTRUCTIONS. ADD LIGHT KIT WATTS TO FAN WATTS FOR TOTAL INPUT WATTS

 LISTED  
Intertek  
XXXXXXXX



**INTRODUCTION  
BEFORE YOU START**

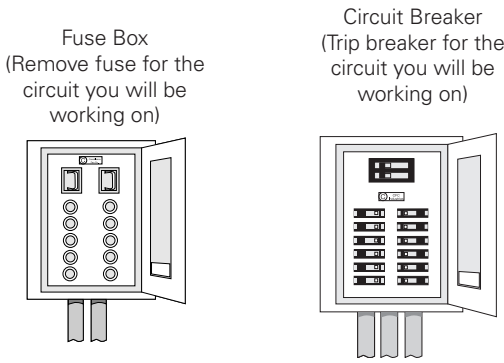
- CAUTION: RISK OF ELECTRICAL SHOCK! Installation is to be in accordance with the National Electrical Code, ANSI/NFPA 70-1999 and local codes. If you are unfamiliar with the wiring codes, you should use a qualified electrician. To avoid overheating and possible damage to other equipment, do not install control to a receptacle, fluorescent light fixture, motor-operated appliance, or transformer-supplied appliance.
- This light kit requires a grounded electrical supply of 120 VAC, 60 Hz and a minimum 15 amp circuit. Maximum light current is 1 amp or 120 watts of lighting.
- Where wire nuts are employed, be sure all bare wires are within the connectors. When installing the canopy, make sure all wires are within the canopy and that no wires are being pinched.

This light kit is compatible with these Casablanca Fans:  
Barolo, Brescia, Capistrano, Concentra, Cottage, Estrada, Heritage, Holliston, Key Largo II, Lanai, Malibu Star, Metropolitan, Panama, Utopian, Ventura, Victorian and Wailea

It is also compatible with many Hunter Ceiling Fans. Please check with an Authorized dealer for compatible models.

**SAFE USE**

- Inspect the contents of your carton for possible shipping or handling damage. If parts are missing or damaged, call 1-888-227-2178.
- It is always a good idea to have an assistant to help with the installation.
- Always turn the power OFF to the light kit before replacing lightbulbs.
- Contact Casablanca Fan Company by calling 1-888-227-2178, or contact your local authorized Casablanca dealer for assistance in obtaining service.



**OPTIONAL ACCESSORIES**

Consider using Soundelier's® optional accessories, which include Wireless Subwoofers and Duo™ Lamps.

Optional accessories can be purchased through Casablanca Authorized Dealers.



## GETTING STARTED

This Light Kit can be installed in two different ways. Decide whether to install on the ceiling or to an compatible ceiling fan.

To Install on a Ceiling start with Mounting Bracket Installation on Page 6

To Install on an compatible ceiling fan, start with Installation on a Fan on Page 9

To Install on an Hunter compatible ceiling fan, start with Installing on a Hunter Ceiling Fan on Page 16.

## INSTALLATION ON A CEILING MOUNTING BRACKET INSTALLATION

### CEILING HARDWARE (not to scale)



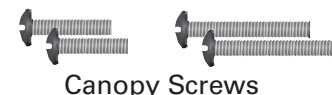
Hanger Bracket



#8-32 Hex Nuts



Ceiling Box Screws



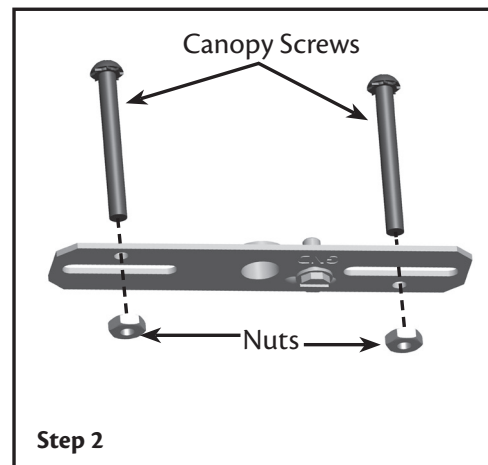
Canopy Screws

**Step 1.** If you are replacing an existing light fixture, disconnect and remove the old fixture and mounting bracket. Leave the wires coming from the outlet box exposed.

**Step 2.** If the ceiling box is recessed use the longer Canopy Screws.

**Step 3.** Pre-install the two Canopy Screws, and the corresponding #8-32 hex nuts on the hanger bracket, and tighten the hex nuts securely.

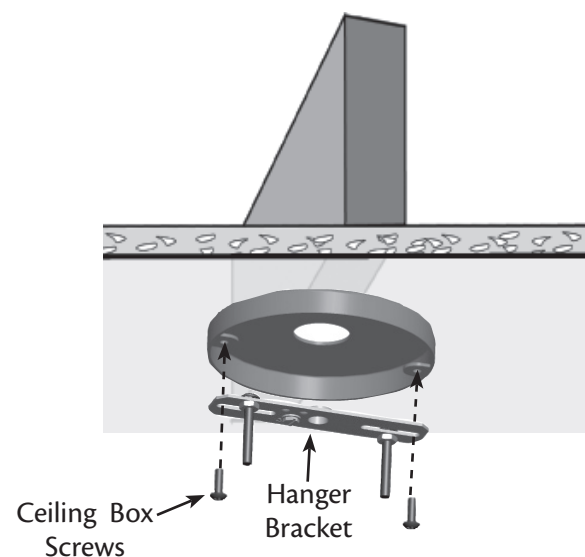
**Note:** The hanger bracket should be positioned so that the two #8-32 screws are coming down and the green grounding screw is going up towards the ceiling.



Step 2

**Step 4.** Using the screw holes located on the electrical box, secure the hanger bracket to the electrical box by inserting the Ceiling Box screws through the slotted holes in the hanger bracket and thread into the ceiling box.

**Note:** The screws for installing the hanger bracket to the electrical box should be installed in the opposite direction as the screws for installing the ceiling plate cover to the hanger bracket.



Ceiling Box Screws  
Hanger Bracket

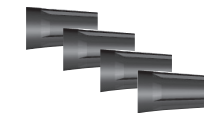
## CONCERT BREEZE



## CANOPY INSTALLATION



Canopy



Wire Connectors

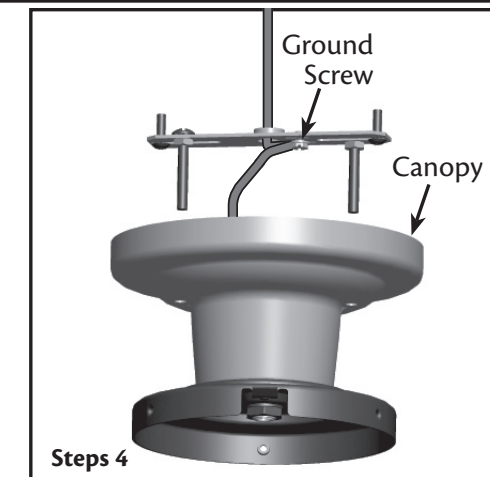


Thumb Nuts



Spring Washers

**Step 5.** Locate the green ground wire from the canopy and the supply ground wire coming out of the electrical box. Connect the ground wire from the canopy and the supply ground wire to the green ground screw on the hanger bracket. Tighten the green ground screw.

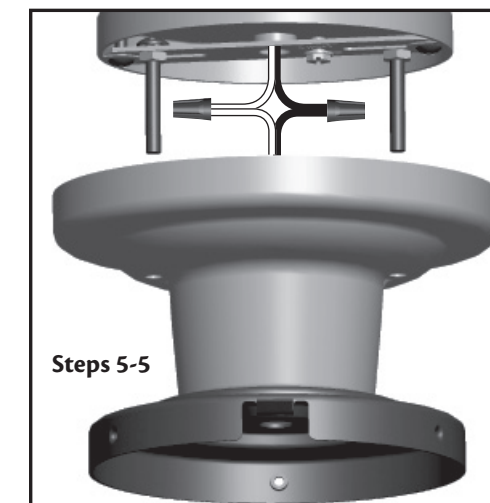


Steps 4

**Step 6.** Connect the white wire from the canopy to the white supply wire coming out of the ceiling. Connect the black wire from the canopy to the black supply wire coming out of the ceiling. Secure all wire connections using approved wire connectors.

**NOTE:** To connect the wires, hold the bare metal leads together and place a wire connector over them, then twist the wire connector clockwise until tight.

**Step 7.** Spread the electrical splices so that the black wires are on one side of the outlet box and the white wires are on the other side.

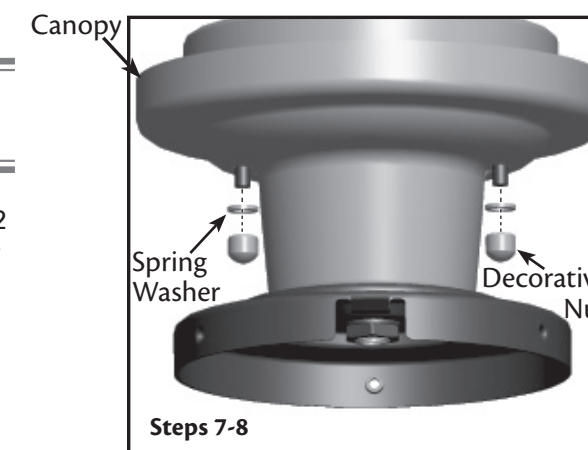


Steps 5-6

**CAUTION:** Be sure no bare metal wires or wire strands are visible after making the connections.

**Step 8.** Align the holes in the canopy with the #8-32 canopy screws that were pre-installed on the hanger bracket. Raise the canopy and insert the screws through the two holes in the cover plate.

**Step 9.** Install the spring washers and thumb nuts on the end of each of the #8-32 canopy screws. Tighten securely.



Steps 7-8



## CAP INSTALLATION



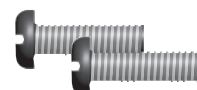
Cap



Star Washer



IPS Nut



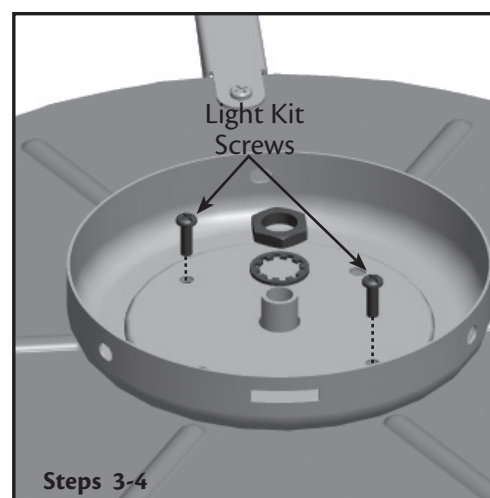
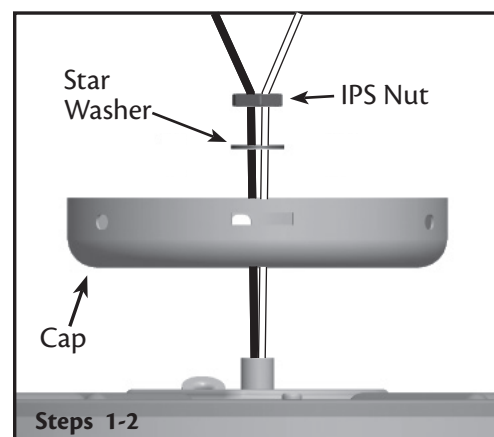
Light Kit Screws

**Step 1.** Feed the two wires from the light kit/speaker up through the center hole in the cap, star washer, and IPS nut.

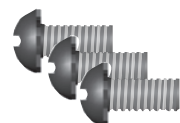
**Step 2.** Insert the threaded rod from the light kit/speaker assembly into the center hole in the cap.

**Step 3.** Align the screw holes in the bottom of the cap with the screw holes on top of the light kit/speaker assembly.

**Step 4.** Install and tighten the light kit screws.



## WIRING AND INSTALLING LIGHT KIT/ SPEAKER



Cap Assembly Screws



Wire Connectors

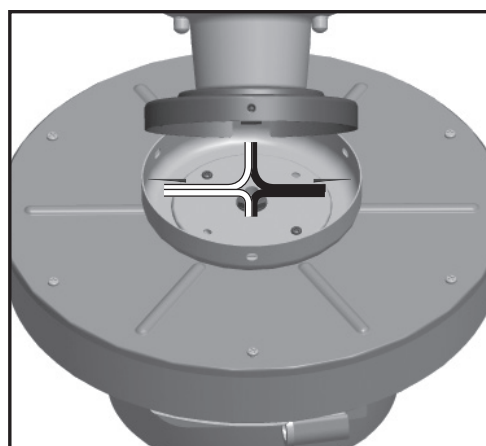
**Step 1.** Lift the light kit/speaker to the canopy and hang on hook.



**Step 2.** Connect the black wire from the light kit/speaker and the black wire from the canopy.

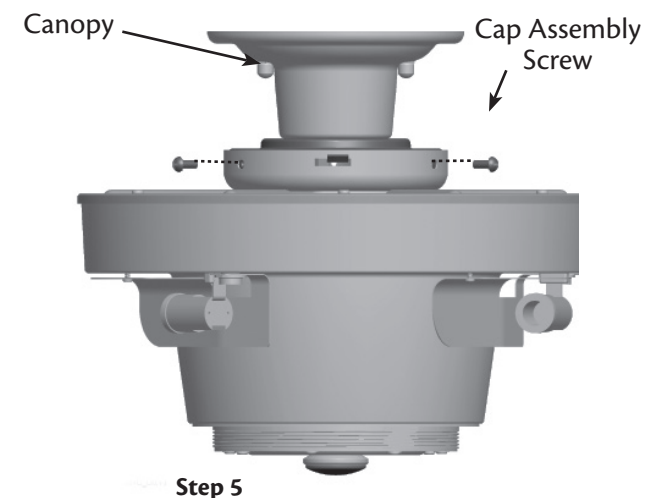
**Step 3.** Connect the white wire from the light kit/speaker and the white wire from the canopy.

**Step 4.** Secure all wire connections using wire connectors.



**CAUTION:** Be sure no bare metal wires or wire strands are visible after making the connections. Align the side screw holes in the canopy and the cap.

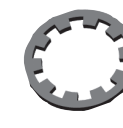
**Step 5.** Attach the light kit/speaker with three cap assembly screws.



## INSTALLATION ON A FAN CAP INSTALLATION



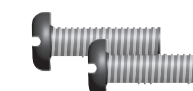
Cap



Star Washer



Nut



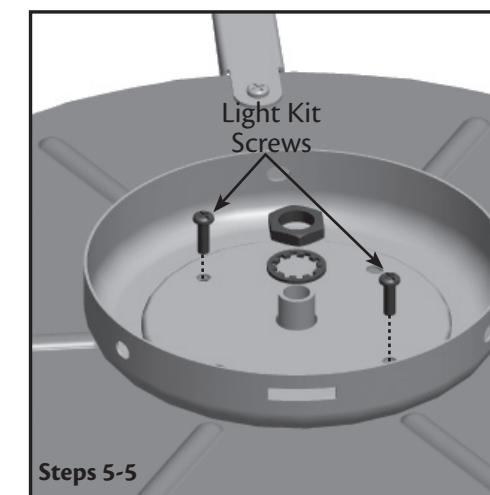
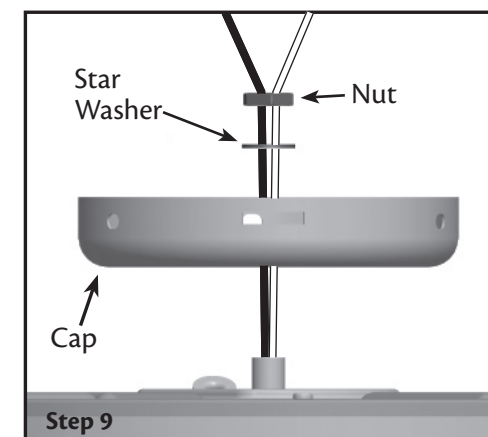
Light Kit Screws

**Step 1.** Feed the two wires from the light kit/speaker up through the center hole in the cap, star washer, and IPS nut.

**Step 2.** Insert the threaded rod from the light kit/speaker assembly into the center hole in the cap.

**Step 3.** Align the screw holes in the bottom of the cap with the screw holes on top of the light kit/speaker assembly.

**Step 4.** Install and tighten the light kit screws.



## INSTALLING ON A FAN WITH PULL CHAIN REVERSING

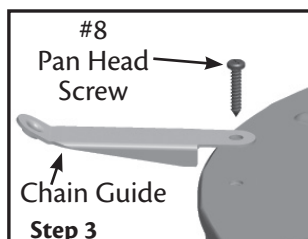
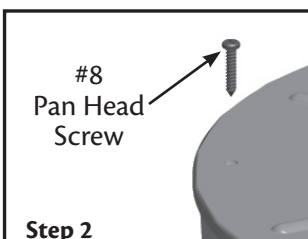


Chain Guide

**Step 1.** Select location to install chain guide aligning reverse pull chain and chain guide.

**Step 2.** Remove #8 pan head screw.

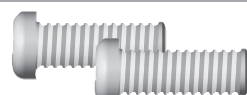
**Step 3.** Install chain guide with #8 pan head screw removed from step 2.



## INSTALLING FAN ADAPTOR



Adaptor

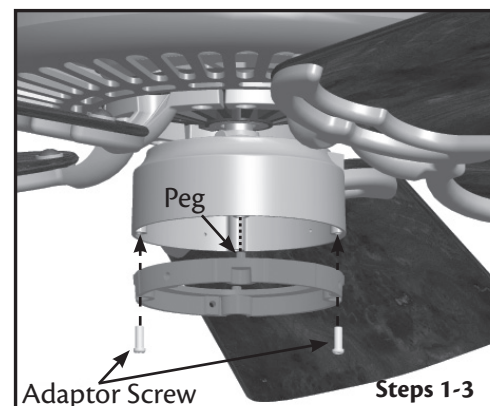


Adaptor Screws

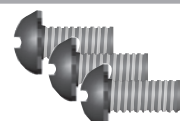
**Step 1.** Install adaptor to bottom of fan by aligning pegs on the adaptor with the holes on the bottom of the fan switch housing.

**Step 2.** Attach adaptor by installing two adaptor screws.

**Step 3.** Securely tighten.



## WIRING AND INSTALLING LIGHT KIT / SPEAKER



Cap Assembly Screws



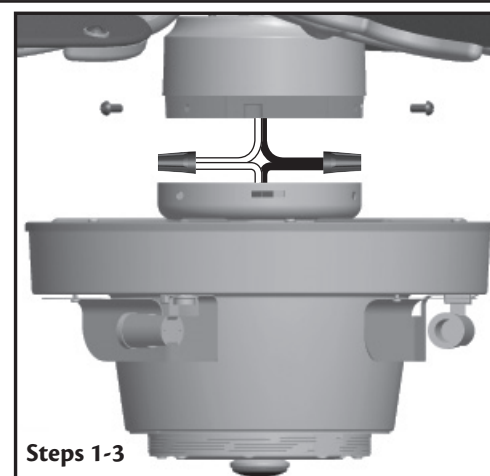
Wire Connectors

**Step 1.** Connect the black wire from the light kit/speaker and the blue wire from the canopy.

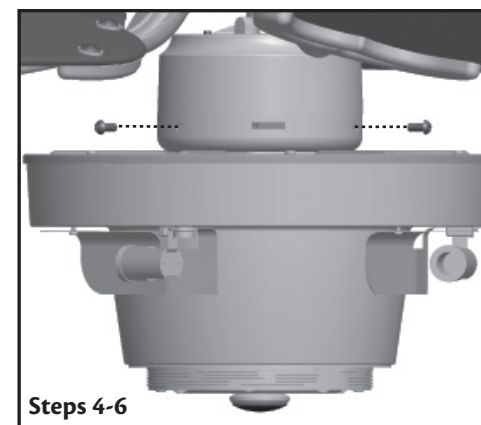
**Step 2.** Connect the white wire from the light kit/speaker and the white wire from the canopy.

**Step 3.** Secure all wire connections using wire connectors.

**CAUTION:** Be sure no bare metal wires or wire strands are visible after making the connections.



## CONCERT BREEZE



**Step 4.** Lift the light kit/speaker to the adaptor on the bottom of the fan switch housing.

**Step 5.** Align the side screw holes in the adaptor and the cap.

**Step 6.** Attach the light kit/speaker with three cap assembly screws.

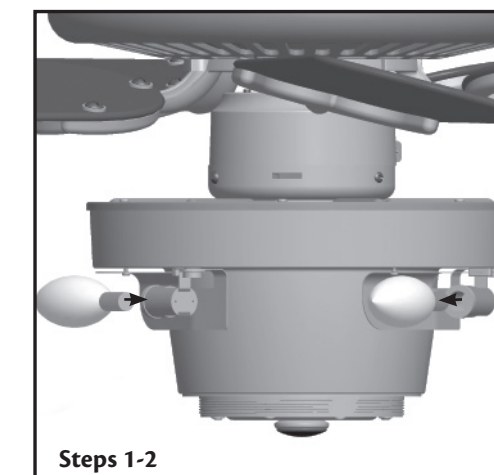
## COMPLETING INSTALLATION OF LIGHT KIT INSTALLING LIGHT BULBS AND GLASS



**Step 1.** Remove the protective ring foam.

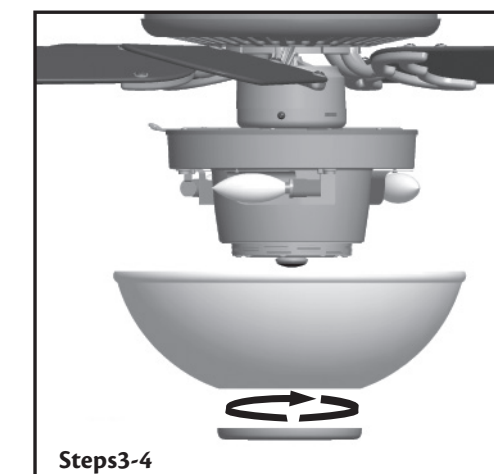
**Step 2.** Remove the three lower bulbs from their packaging, and install into the light kit.

Note: When replacing bulbs, only replace with max 40 watt bulbs.



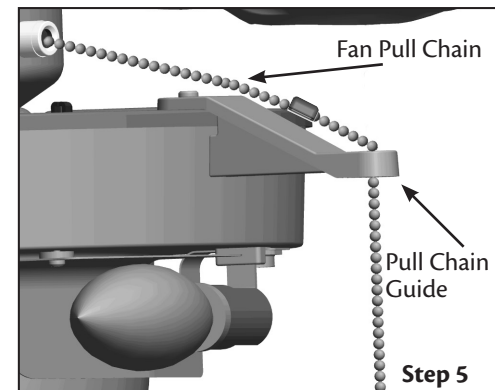
**Step 3.** Place glass bowl over the light kit/speaker assembly, ensuring the threaded portion of the light kit/speaker assembly comes out of the bottom of the glass.

**Step 4.** Place the finial over the threaded portion of the light kit/speaker assembly and twist it as clockwise until tight against the glass bowl.

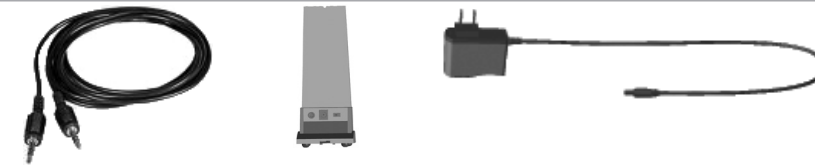




**Step 5.** Thread the fan pull chain through the pull chain guide.



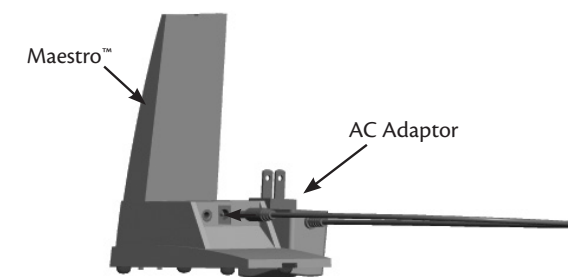
## INSTALLATION AND SETUP OF MAESTRO™ AND REMOTE SETTING UP THE MAESTRO™



### For Power Cable Installation:

**Step 1.** Plug the AC adaptor into the back of the Maestro™ in the port labeled **Power**.

**Step 2.** Select the correct channel by sliding the switch to the desired channel.



### For 3.5mm Stereo Cable Installation:

**Step 3.** Plug a 3.5mm stereo cable into the back of the Maestro™ in the port labeled **line in**.

**Step 4.** Plug the other end of the 3.5mm stereo cable into your audio device.



### For Speaker Wire Installation:

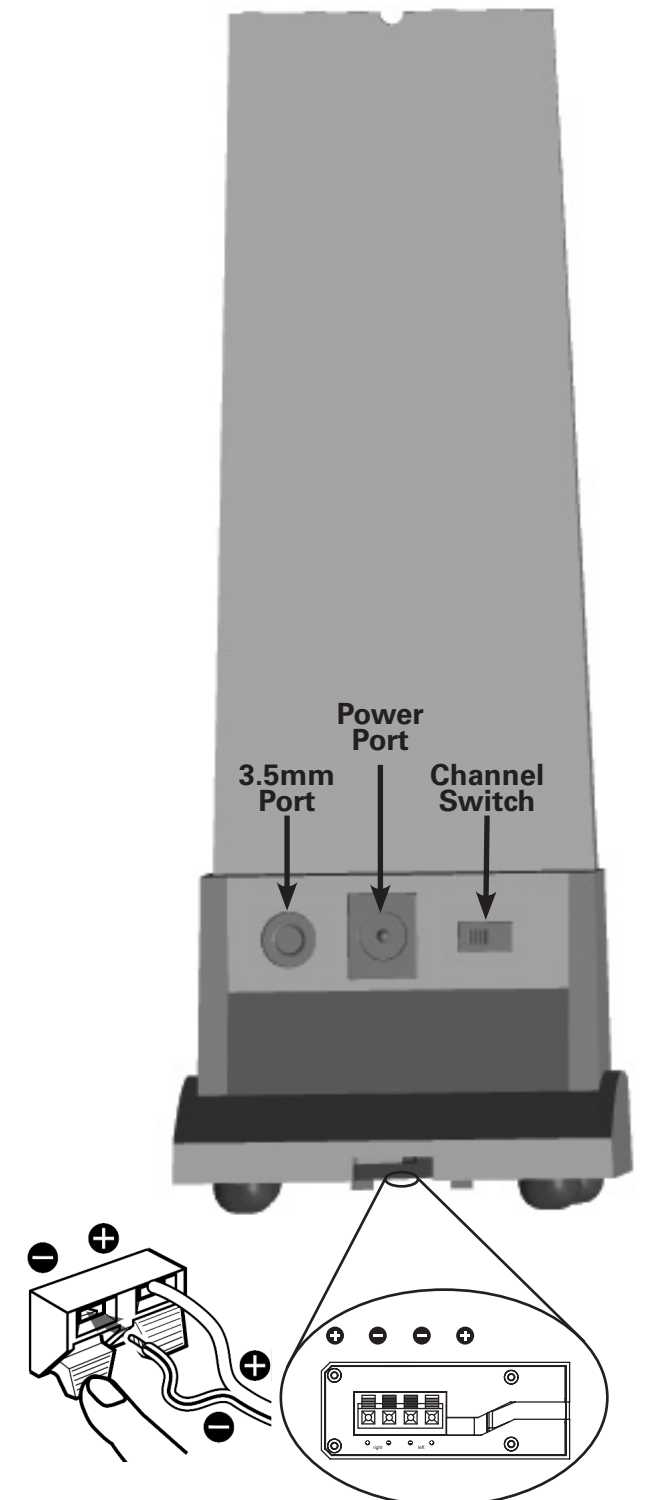
**Step 5.** Connect the speaker wire (not included) to the speaker input terminals on the bottom of the Maestro™. Make sure that the plus (+) and the minus (-) signs on the Maestro™ correspond with the plus (+) and the minus (-) signs on your audio device.

**Step 6.** Make sure that all connections are firm.

**▲ NOTE:** Contact between bare speaker wires at the terminals can cause a short-circuit.

**Do Not place Maestro™ in a place that is damp or has high humidity.**

**Place Maestro™ at least 5' away from all wireless devices.**






**Step 7.** Install the included 3-volt battery into the transmitter.



This product includes one 3-volt type CR2025 battery for use with the remote control transmitter. Please contact your local battery recycling center for proper battery disposal information.

## OPERATING THE REMOTE CONTROL (LIGHT/SPEAKER)


### Light:



 Pressing the ON/OFF button on the remote once will turn the light on and pressing the button again will turn the light off.



 Press  to increase the brightness of the light.



 Press  to decrease the brightness of the light.

### Speaker:

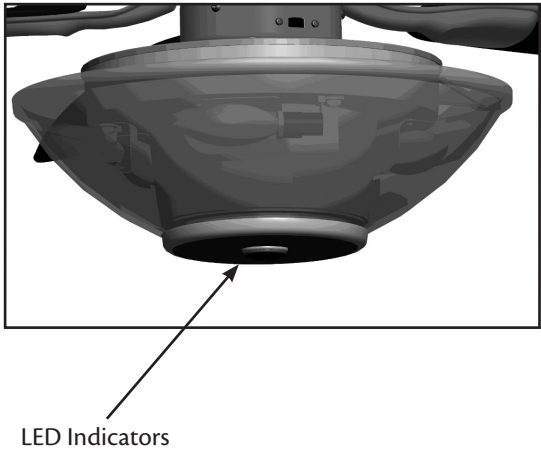
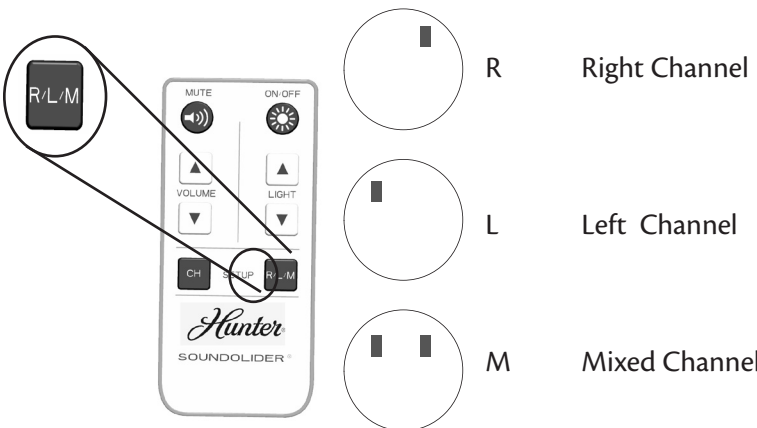
 Pressing the MUTE button on the remote once will turn the speaker on and pressing the button again will turn the speaker off.

 Press  to increase the VOLUME of the speaker.

 Press  to decrease the VOLUME of the speaker.

 Pressing the  will switch the surround sound function between:


### LED Indicators



## CHANGING THE CHANNEL ON THE MAESTRO™ AND CONCERT BREEZE

**▲ NOTE:** The Maestro™ transmitter and the light kit must be on the **same channel** to transmit and receive properly.

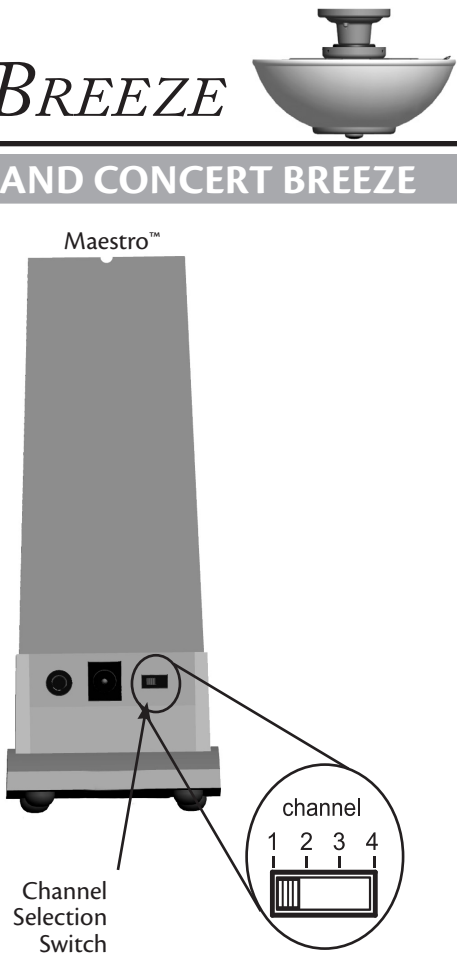
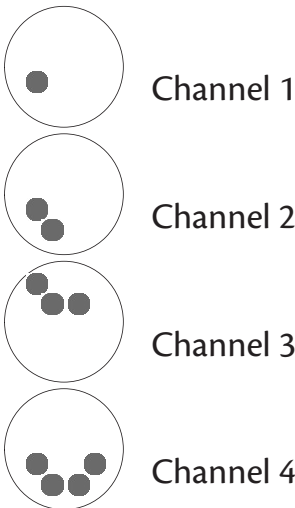
**Step 1.** To change the channel on the Maestro™, slide the channel selection switch on the lower right corner of the transmitter.

**Step 2.** To change the channel on the fan press the  button on the remote.

**Step 3.** The green/red LED indicators on the bottom of the fan display the channel the fan is tuned to. Green LEDs indicate a good signal and red LEDs indicate no signal.



### LED Indicators



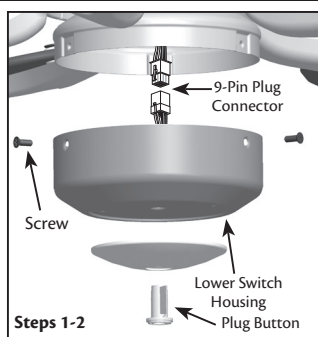


## INSTALLING ON A HUNTER CEILING FAN

**Step 1.** Unscrew the three screws from the upper switch housing. Disconnect the 9-pin plug connectors. Remove the lower switch housing.

**Step 2.** Push the plug button from inside the lower switch housing to remove the plug button and switch housing cap. **NOTE:** Save the plug button and switch housing cap should you choose to remove the light fixture in the future.

**CAUTION:** If your fan is operated by remote control, take care not to damage the small components on the circuit board inside the housing.

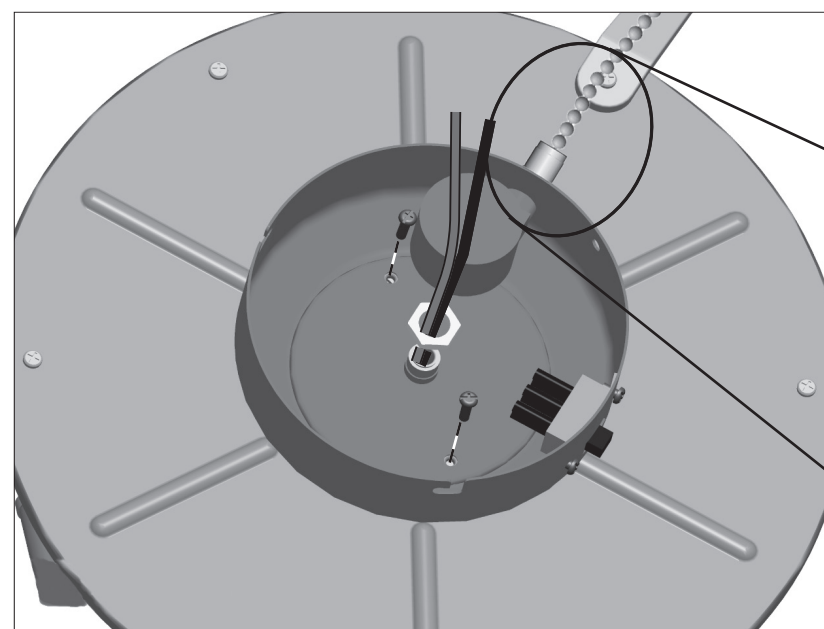
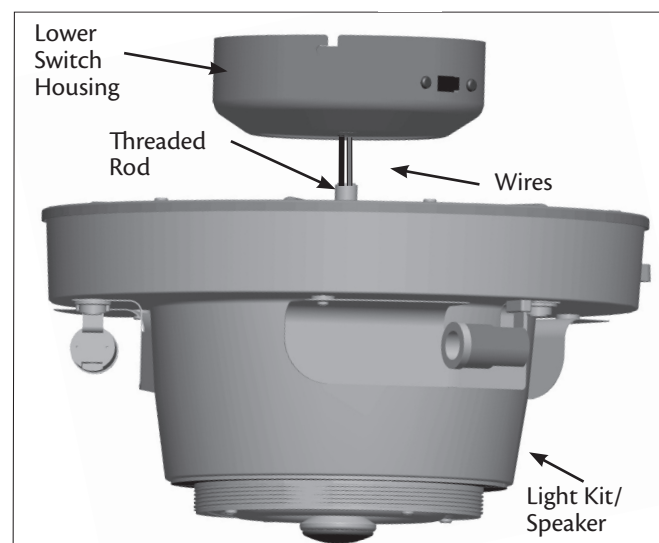


**Step 3.** Feed the two wires from the light kit up through the center hole in the lower switch housing.

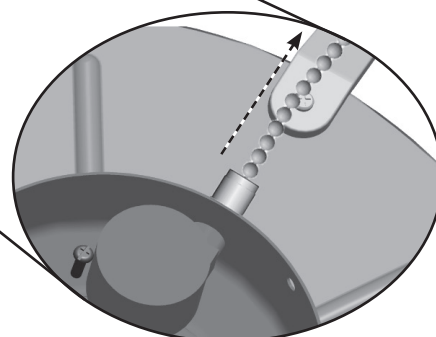
**Step 4.** Screw the threaded rod from the light kit/speaker assembly into the center hole in the lower switch housing.

**Step 5.** Install the nut and washer onto the threaded rod from the light kit/speaker assembly.

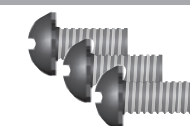
**Step 6.** Remove the wire connectors from the two wires in the switch housing labeled "Connect Light Here" or "For Light Use."



**Note:** Align the fan pull chain with the chain guide.



## WIRING AND INSTALLING LIGHT KIT/ SPEAKER



Cap Assembly  
Screws



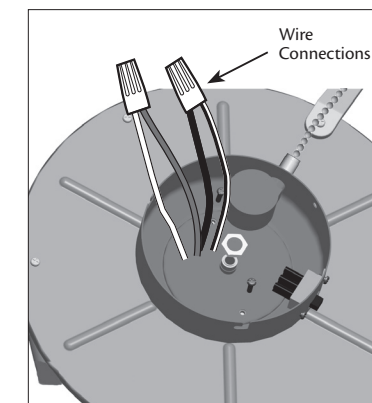
Wire  
Connectors

**Step 1.** Connect the black wire from the light kit/speaker and the blue wire from the canopy.

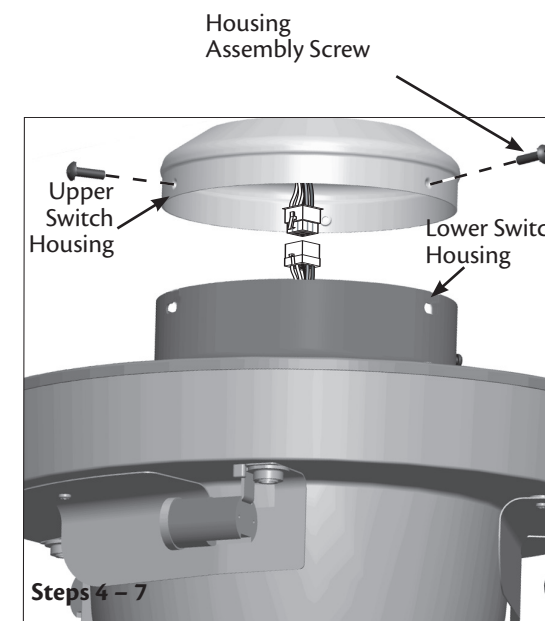
**Step 2.** Connect the white wire from the light kit/speaker and the white wire from the canopy.

**Step 3.** Secure all wire connections using wire connectors.

**CAUTION:** Be sure no bare metal wires or wire strands are visible after making the connections.



Steps 1-3



**Step 4.** Lift the light kit/speaker to the upper switch housing on the bottom of the fan switch housing.

**Step 5.** Connect the upper plug connector from the motor to the lower plug connector in the lower switch housing assembly.

**Note:** Both plug connectors are polarized and will only fit together one way. Make sure the connectors are properly aligned before connecting them. Incorrect connection could cause improper operation and damage to the product.

**Step 6.** Align the side screw holes in the upper housing and the lower switch housing.

**Step 7.** Attach the light kit/speaker with three cap assembly screws.

Go to Completing Installation of  
Light Kit **on Page 11**

## TROUBLESHOOTING TIPS

Please refer to this troubleshooting guide before requesting service or contacting your dealer for assistance.

Sound does not come on.

- Check to make sure the Maestro™ has power.
- Press the MUTE button to turn on the speaker.
- Make sure that the speaker is on the correct channel.

Interference with wireless devices.

- Change the channel on the Maestro™ and the fan. See
- Changing the Channel on the Maestro™ and the Fan."
- Change the channel on the wireless device.

Lights will not come on

- Check the main circuit fuses, circuit breakers, and wall switch position. Check all wire connections. Make sure the power is turned off during this inspection.

Lights dim when turned on or do not turn on.

- Check to make sure the wattage and type of light bulbs installed match the specifications on the light socket.

This device complies with RSS-210 of Industry Canada. Operation is subject to the following two conditions: (1) this device may not cause interference, and (2) this device must accept any interference, including interference that may cause undesired operation of the device.

1. This device complies with part 15 of the FCC Rules. Operation is subject to the following two conditions: (1) this device may not cause harmful interference, and (2) this device must accept any interference received, including interference that may cause undesired operation.

2. This equipment has been tested and found to comply with the limits for a Class B digital device, pursuant to Part 15 of the FCC Rules. These limits are designed to provide reasonable protection against harmful interference in a residential installation. This equipment generates, uses and can radiate radio frequency energy and, if not installed and used in accordance with the instructions, may cause harmful interference to radio communications. However there is no guarantee that interference will not occur in a particular installation. If this equipment does cause harmful interference to radio or television reception, which can be determined by turning the equipment off and on, the user is encouraged to try to correct the interference by one or more of the following measures: Reorient or relocate the receiving antenna, Increase the separation between the equipment and receiver, Connect the equipment into an outlet on a circuit different from that to which the receiver is connected. Consult the dealer or an experienced radio/TV technician for help. Note: Any changes or modifications to the transmitter or receiver not expressly approved by Casablanca Fan Company may void one's authority to operate this remote control.

## CARE RECOMMENDATIONS

### Changing Lightbulbs

- Be sure to turn the power to OFF at the wall switch or circuit breaker before changing lightbulbs.
- Replace bulbs with the same type as you removed from the light fixture.
- The maximum wattage rating for this light kit is 120 watts.

**FOR QUESTIONS OR TO LOCATE THE NEAREST CASABLANCA  
AUTHORIZED SERVICE CENTER  
CALL TOLL FREE: 1-888-227-2178  
OR VISIT US ON THE WEB AT: [WWW.CASABLANCAFANCO.COM](http://WWW.CASABLANCAFANCO.COM)**