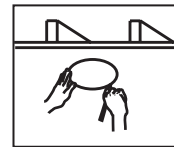


PART# 21A7588
ARTWORK# AW008579

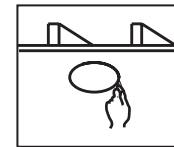
FRONT

H620AW / H622AW

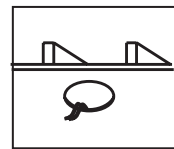
Follow Steps Below:



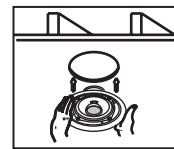
1) Mark Speaker Location



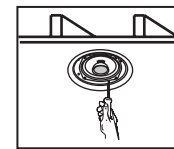
2) Cut Speaker Hole



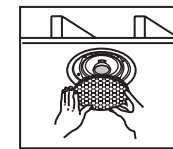
3) Run Wires to Location



4) Attach Wires to Speaker



5) Tighten the Mounting Screws



6) Install the Grille

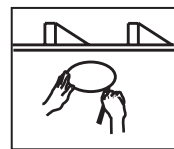
Cut Here for
Mounting Template

Corte aquí para
la Plantilla de Montaje

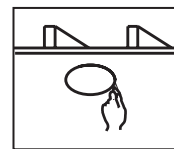
Cut Here
for Paint Shield

Corte aquí para
el Protector de Pintura

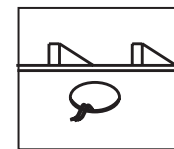
Siga los Siguietes Pasos



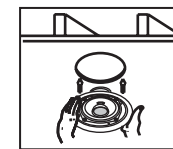
1) Marque el Lugar donde
va el Altavoz



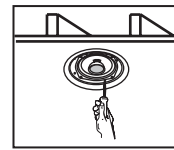
2) Corte el Agujero para
el Altavoz



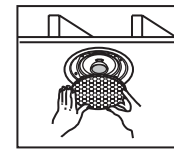
3) Pase los Cables a donde
irá el Altavoz



4) Conecte los Cables al
Altavoz



5) Aprete los Tornillos de
Montaje

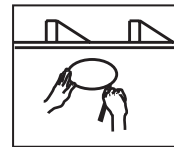


6) Instale la Rejilla

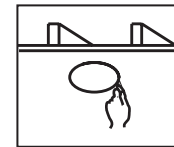
BACK

H620AW / H622AW

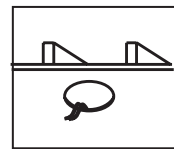
Folgende Schritte einhalten:



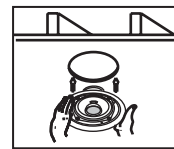
1) Standort des Lautsprechers markieren



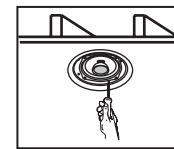
2) Lautsprecherloch schneiden



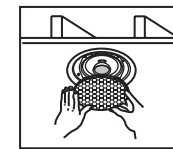
3) Verdrahtung zum Standort legen



4) Verdrahtung am Lautsprecher festmachen



5) Montageschrauben festziehen

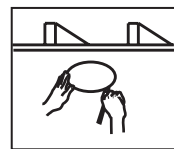


6) Gitter installieren

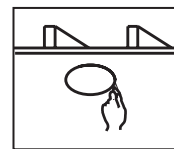
Hier schneiden f. r.
die Montageschablone
Découpez ici le
gabarit de montage

Suivant les étapes ci-dessous

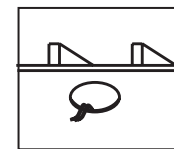
Hier schneiden f. r.
den Anstrichschutz
Découpez ici le masque
de peinture



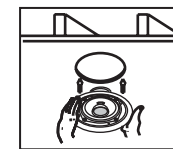
1) Marquez la position du haut-parleur



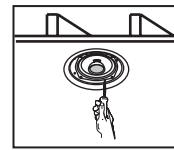
2) Découpez le trou du haut-parleur



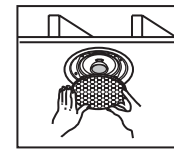
3) Faites passer les câble jusqu'au haut-parleur



4) Raccordez les câbles au haut-parleur



5) Serrez les vis de montage



6) Installez la grille