

# warranty

Soundolier wireless products purchased in the United States from authorized dealers are guaranteed against defects in material and workmanship for a period of 90 days. The warranty period begins the day the product is purchased by the end user. This warranty is limited to the original retail purchaser of the product. Product found to be defective during that period will be repaired or replaced by Soundolier at no charge. This warranty is void if it is determined that unauthorized parties have attempted repairs or alterations of any nature. Warranty does not extend to cosmetics or finish. Before presuming a defect is present in the product, be certain that all related equipment and wiring is functioning properly. Soundolier disclaims any liability for other incurred damages resulting from product defects. Any expenses incurred in the removal and reinstallation of product is not covered by this warranty. Soundolier's total liability will not exceed the purchase price of the product. Shipping charges incurred to send the product in for warranty service shall be paid by the customer. Return shipping from service center to the customer will be paid by Soundolier. Proof of purchase is required when requesting service, so please retain your sales receipt. Also, a Return Authorization number (RA) is required before shipping product back to Soundolier, call 800-837-7879. Retain original packaging for all warranty returns.

# contact information

Thank you for purchasing the Soundolier wireless audio receiver. For technical assistance, or if you have any questions/comments, please contact us by phone at 1-800-837-7879 or by e-mail: [soundolier@mitekcorp.com](mailto:soundolier@mitekcorp.com).

# specifications

## dimensions

- height: 5¾" (14.6cm)
- width: 2¼" (5.7cm)
- depth: 1⅜" (3.4cm)
- weight: 2.2oz (62g)

## audio

- selectable left, right, or mix output

## wireless

- 2.4GHz stereo receiver
- 4 selectable signal channels
- 20Hz-20kHz full range audio
- 300ft (100m) maximum reception range



# SOUNDOLIER®

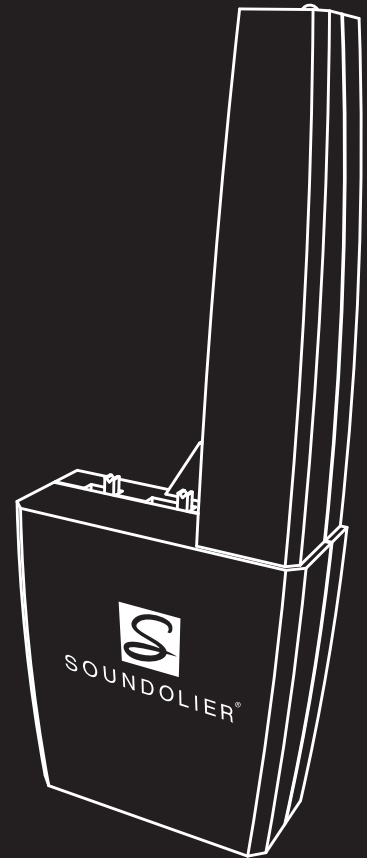
*Integrated Wireless Technologies*

Soundolier, 1 Mitek Plaza, Winslow, IL 61089

© 2007 Soundolier. Soundolier, duo, maestro & maestroSWR are trademarks of Mitek Corp. All rights reserved. Due to continual product development, all specifications are subject to change without notice.

SLR002855 RevA 8/07

NDM561



# maestroSWR™

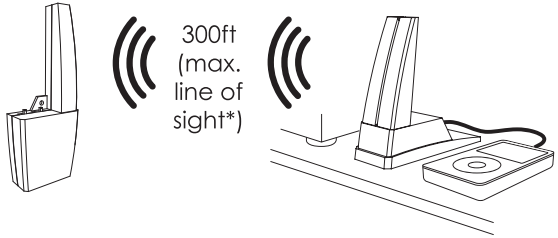


SOUNDOLIER®

wireless digital audio receiver

# setup guide

## wireless mode

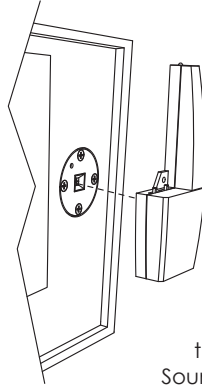


300ft  
(max.  
line of  
sight\*)

wireless transmitter may be sold separately

\*walls and other obstructions may limit range

## step 1: unplug speaker/sub & insert maestroSWR

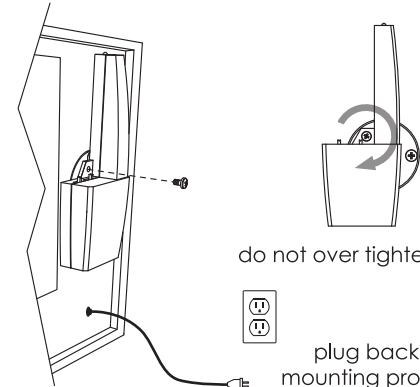


icon indicates orientation



the maestroSWR can only be used on  
Soundolier Wireless Ready audio devices

## step 2: mount with provided screw

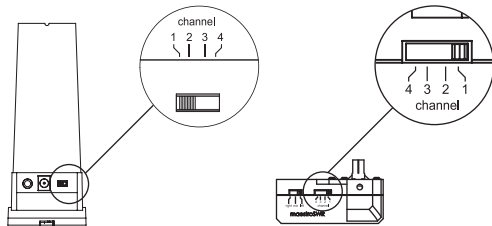


do not over tighten screw

plug back into power after  
mounting process is complete

# interface guide

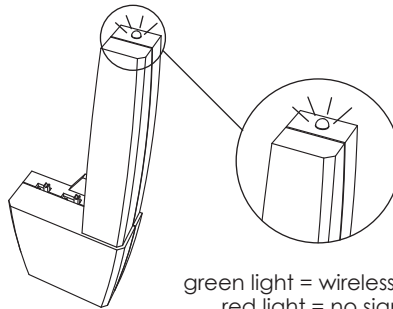
## feature 1: wireless transmission channel select



\* if wireless signal interferes with other devices, change  
both the receiver and the transmitter to different  
corresponding channels

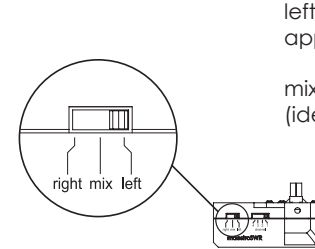
\* possible devices of interference include cordless  
phones, satellite radio, & wireless computer networks

## feature 2: wireless signal detection



green light = wireless signal  
red light = no signal

## feature 3: right/mix/left



left/right - use for surround  
applications

mix - receive 2 channel signal  
(ideal for subwoofers)

Soundolier Wireless Ready audio devices auto  
switch to wireless mode when maestroSWR is connected